

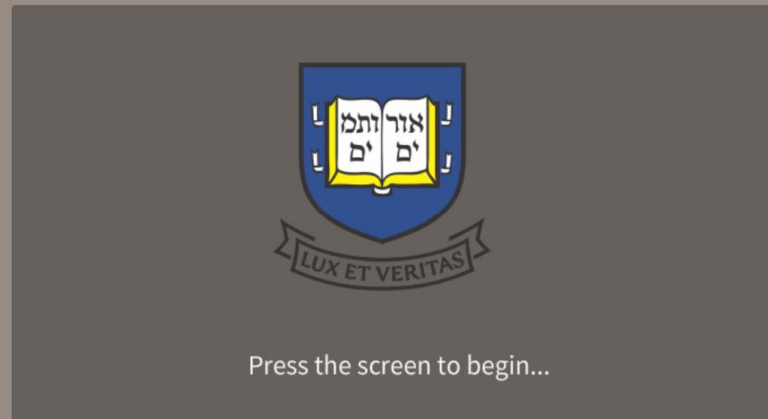
# User Guide – Teaching Lab

## *Splash Page*

This page is displayed when the system is not in use.

Press anywhere on the screen to begin using the audiovisual system.

Yale University



# User Guide – Teaching Lab

## Operation Page – No Source Selected

This is the main page used to operate the system.

- Source buttons are located on the left.
- Audio controls are on the right.
- The bottom buttons will launch additional controls.

The screenshot shows the Yale University Teaching Lab system control interface. The interface has a dark blue header with the Yale University logo. The main area is a large grey rectangle with the text "Select a source using the buttons on the left...". On the left side, there is a vertical list of source buttons: "Room PC" (with a monitor and tower PC icon), "Lectern Laptop" (with a laptop icon), and "Wall Plate" (with a wall plate icon). Below these is a "Monitors" button with a monitor icon. On the right side, there is a "Source Volume" slider, an up arrow button, a down arrow button, and a "Mute" button with a speaker icon and an 'x'. At the top right, there is a power button icon. At the bottom right, the date and time "March 28 2019 8:42 AM" are displayed. Three callout boxes with yellow backgrounds and black text point to specific features: one points to the source buttons on the left, one points to the power button, and one points to the "Monitors" button.

Select a source to view on the displays

Press to turn the system off

Press to view the display control page

# User Guide – Teaching Lab

## Operation Page – Room PC Selected

This is the main page used to operate the system

- Source buttons are located on the left
- Audio controls are on the right
- The bottom buttons will launch additional controls

Select a source to view on the displays.

The white box indicates the currently selected source.



Use this to adjust the volume level of the selected source

Shows information about the currently selected source.

Room PC uses 2 video outputs and will display in extended desktop mode across both displays.

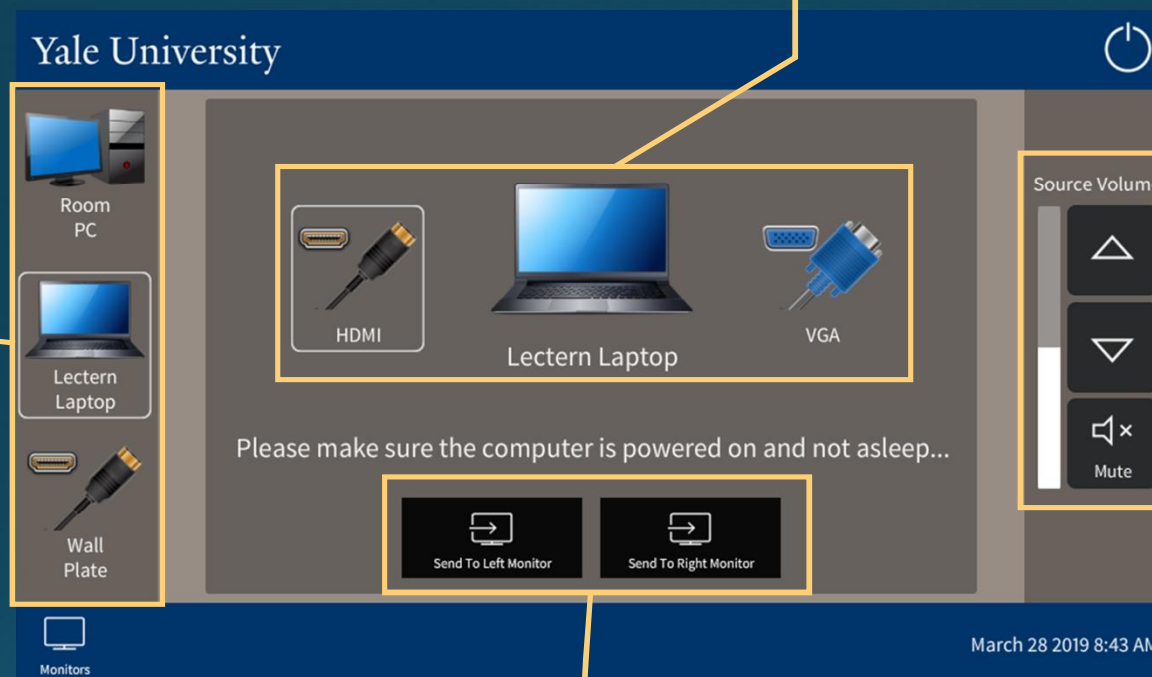
# User Guide – Teaching Lab

## Operation Page – Lectern Laptop Selected

This is the main page used to operate the system

- Source buttons are located on the left
- Audio controls are on the right
- The bottom buttons will launch additional controls

Select which laptop connection to use



Select a source to view on the displays.

The white box indicates the currently selected source.

Use this to adjust the volume level of the selected source

Press 'Send to Left Monitor' to view the selected laptop connection on the left monitor.

Press 'Send to Right Monitor' to view the selected laptop connection on the right monitor.

# User Guide – Teaching Lab

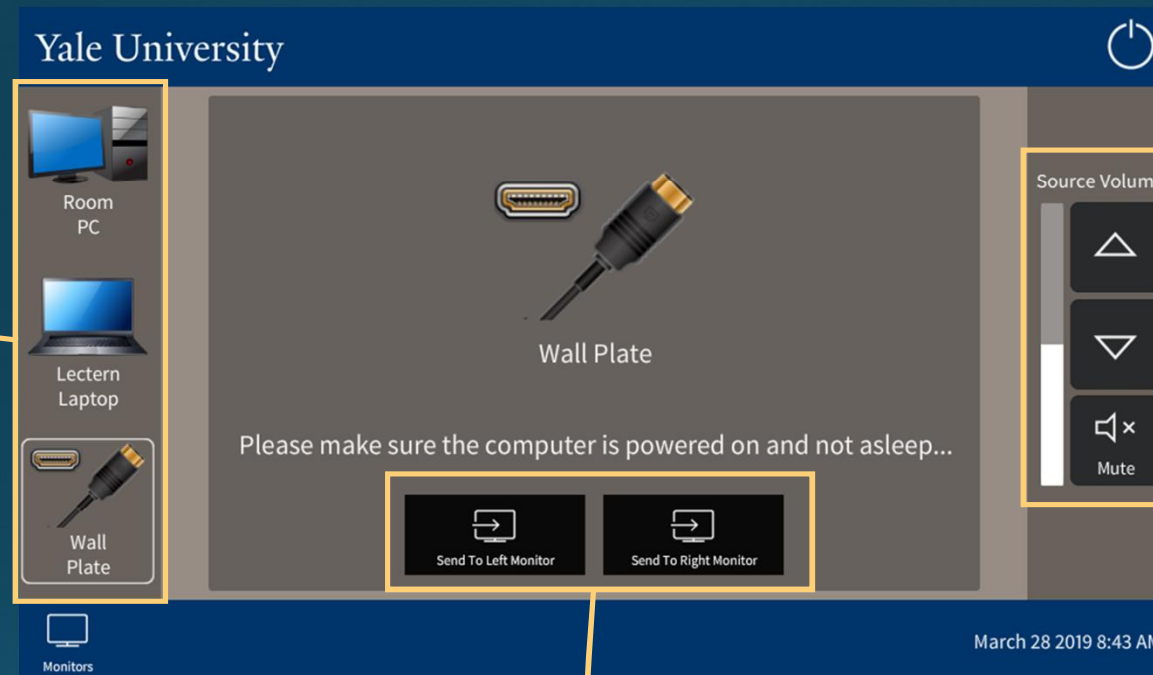
## Operation Page – Wall Plate

This is the main page used to operate the system

- Source buttons are located on the left
- Audio controls are on the right
- The bottom buttons will launch additional controls

Select a source to view on the displays.

The white box indicates the currently selected source.



Use this to adjust the volume level of the selected source

Press 'Send to Left Monitor' to view the wall plate input on the left monitor.

Press 'Send to Right Monitor' to view the wall plate input on the right monitor.

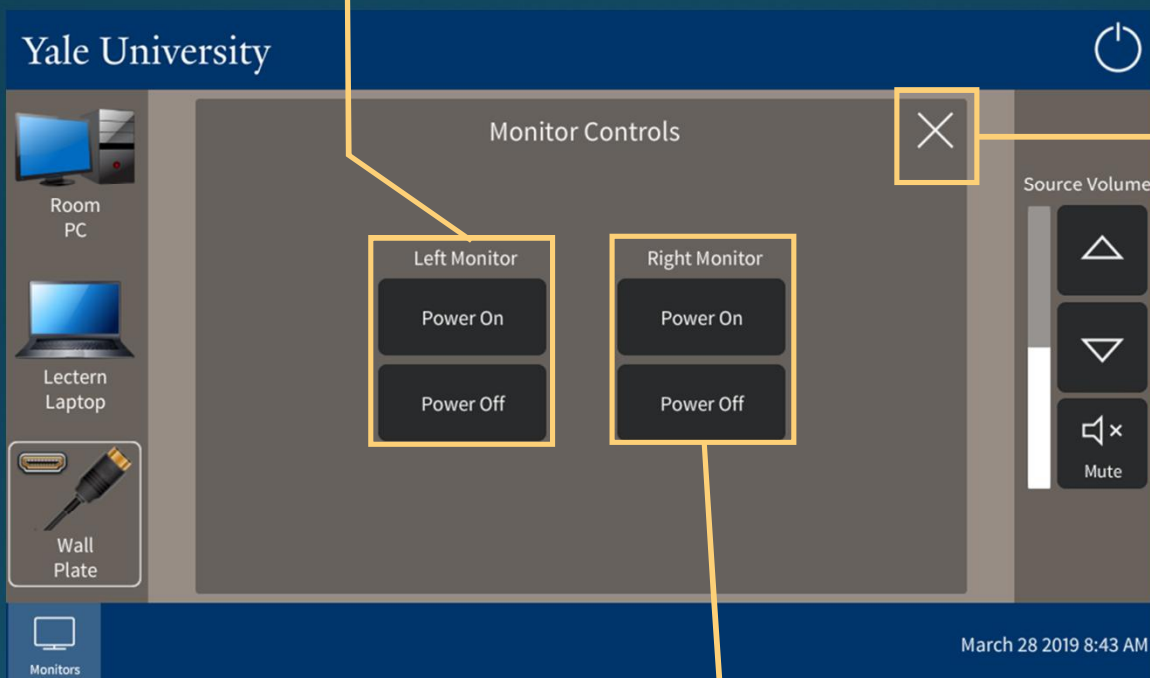
# User Guide – Teaching Lab

## Display Control

This page contains controls related to the flat panel displays

Turn the left display on or off using these buttons.

The display will also turn on automatically when a source is selected, and off when the system is shut down.



Press to exit the display control page

Turn the right display on or off using these buttons.

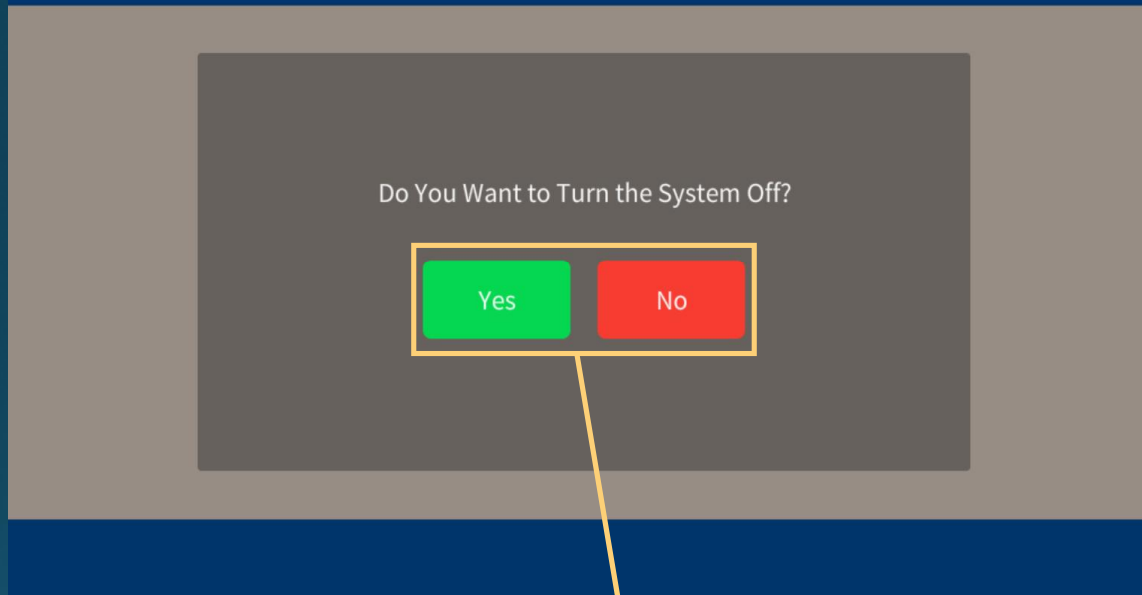
The display will also turn on automatically when a source is selected, and off when the system is shut down.

# User Guide – Teaching Lab

## *System Off*

This page is displayed when the power button is pressed on the operation page.

Yale University



Press 'Yes' to turn off the system.  
Press 'No' to return to normal operation.